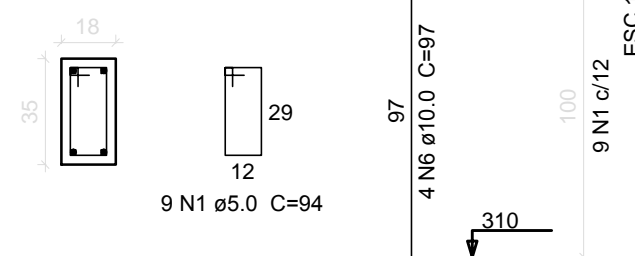




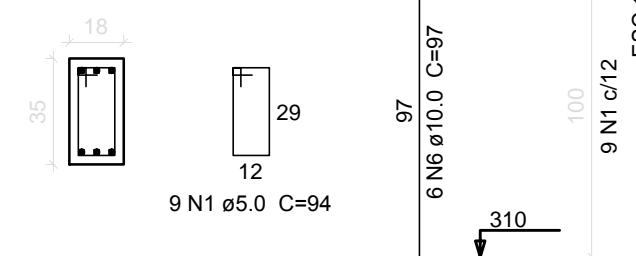
P1=P2=P3=P6=P9=P10=P14=P15=
=P19=P20=P25=P28=P31=P40=P41

PLATIBANDA - L3
ESC 1:25



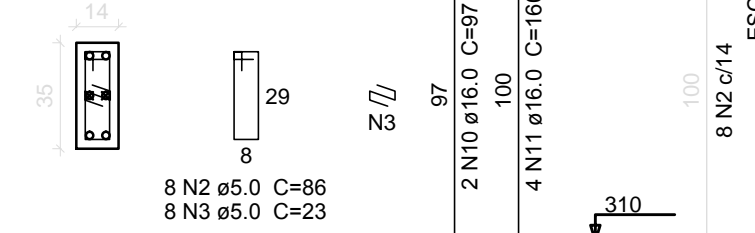
P4=P5=P38=P39

PLATIBANDA - L3
ESC 1:25



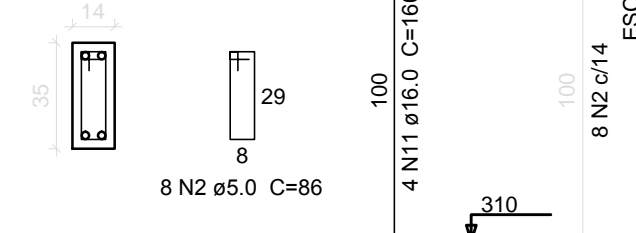
P17

PLATIBANDA - L3
ESC 1:25



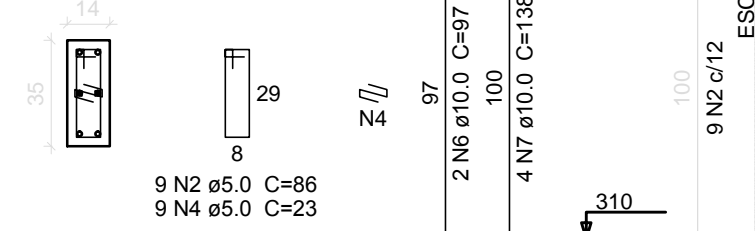
P18

PLATIBANDA - L3
ESC 1:25



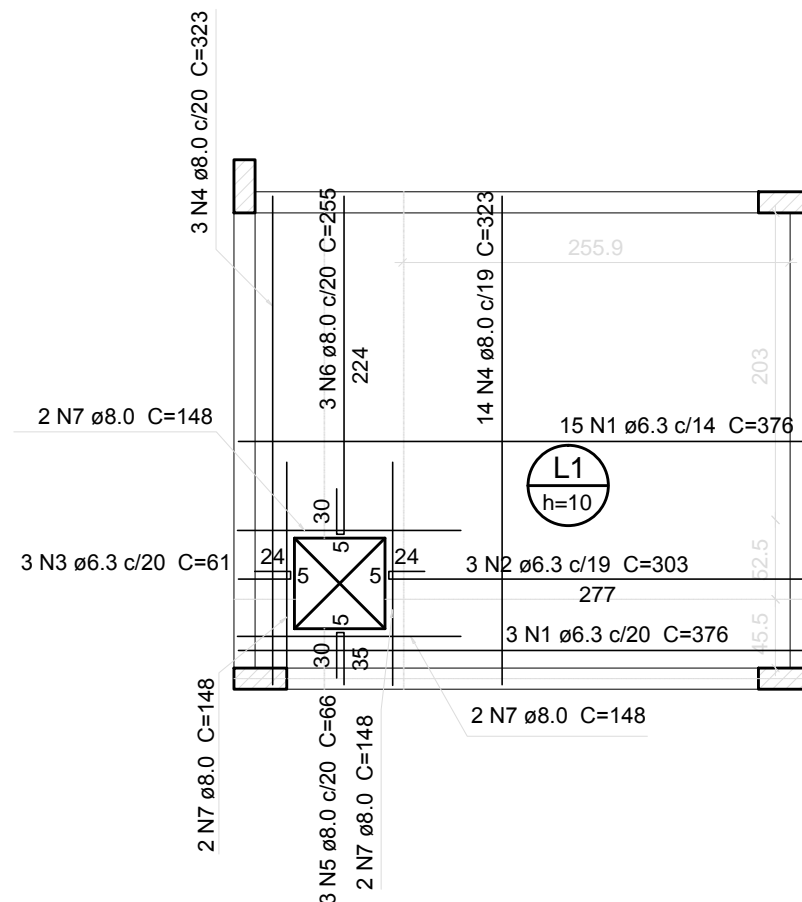
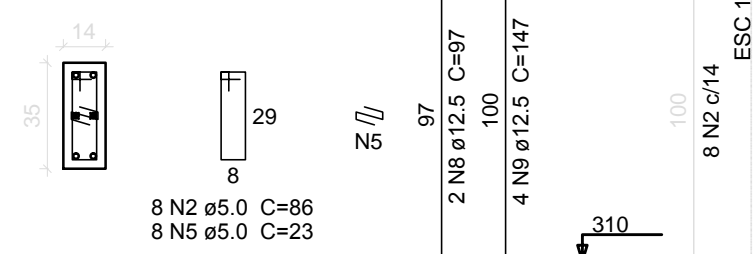
P23

PLATIBANDA - L3
ESC 1:25



P24

PLATIBANDA - L3
ESC 1:25



Relação do aço

Positivos

AÇO	N	DIAM (mm)	QUANT	C.UNIT (cm)	C.TOTAL (cm)
CA50	1	6.3	18	376	6768
	2	6.3	3	303	909
	3	6.3	3	61	183
	4	8.0	17	323	5491
	5	8.0	3	66	198
	6	8.0	3	255	765
	7	8.0	8	148	1184

Resumo do aço

AÇO	DIAM (mm)	C.TOTAL (m)	PESO + 10 % (kg)
CA50	6.3	78.6	21.2
	8.0	76.4	33.2
PESO TOTAL (kg)			
CA50		54.3	

Volume de concreto (C-25) = 1.03 m³
Área de forma = 10.33 m²

Relação do aço

15xP1
P18

4xP4
P23

P17
P24

AÇO	N	DIAM (mm)	QUANT	C.UNIT (cm)	C.TOTAL (cm)
CA60	1	5.0	171	94	16074
	2	5.0	33	86	2838
	3	5.0	8	23	184
	4	5.0	9	23	207
	5	5.0	8	23	184
CA50	6	10.0	86	97	8342
	7	10.0	4	138	552
	8	12.5	2	97	194
	9	12.5	4	147	588
	10	16.0	2	97	194
	11	16.0	8	160	1280

Resumo do aço

AÇO	DIAM (mm)	C.TOTAL (m)	PESO + 10 % (kg)
CA50	10.0	89	60.3
	12.5	7.9	8.3
	16.0	14.8	25.6
CA60	5.0	194.9	33
PESO TOTAL (kg)			
CA50		94.2	
CA60		33	

Volume de concreto (C-25) = 1.39 m³
Área de forma = 24.06 m²

Armação positiva das lajes do pavimento Platibanda

escala 1:50



SECRETARIA DE
PLANEJAMENTO E GESTÃO

ESCOLA PIRATININO DE ALMEIDA

END: AV. DOMINGOS DE ALMEIDA, N. 4057 - AREAL
DET. PILARES, PLATIBANDA E LAJE RESERVATÓRIO - BLOCO B

EQUIPE TÉCNICA DA UGP

ARQ. ELISE LOPES DUTRA CAU A46844-4
ENG. PATRICIA WALTZER DA SILVA - CREA 139996

Prancha

09/19

Escala

INDICADA

Data

JUNHO / 2017

Av. Ferreira Viana, 1135 – Pelotas/RS – CEP: 96085-000 Fone: (53) 33101350 – (53) 3227-1513
E-mail: seplag@pelotas.rs.gov.br